

# Year 2 Science

# Plants

I can explain the life cycle of plants.

[www.grammarsaurus.co.uk](http://www.grammarsaurus.co.uk)



**Grammarsaurus**

# Partner Time...

In partners, can you act out a seed growing?

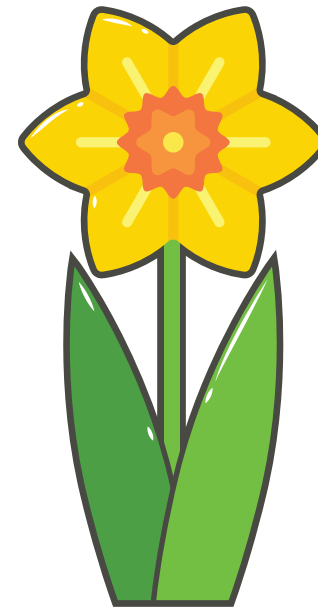
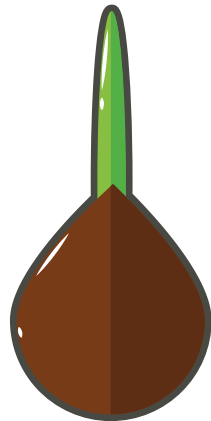
Remember, the roots grow down  
and the seedling grows up!



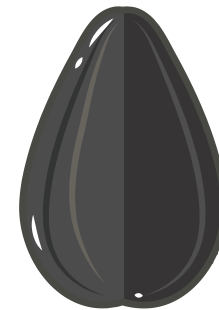
# How different plants grow.

Strawberries grow from seeds but different plants grow in different ways.

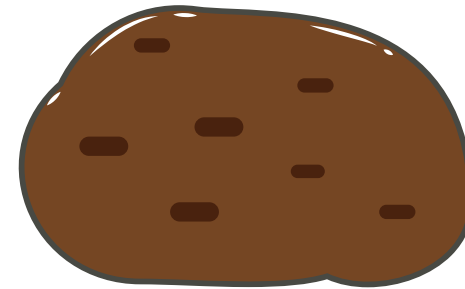
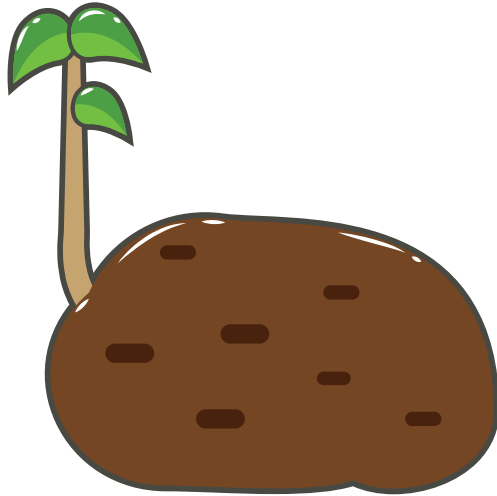
Daffodils grow from bulbs.



Sunflowers grow from bigger seeds than strawberries.

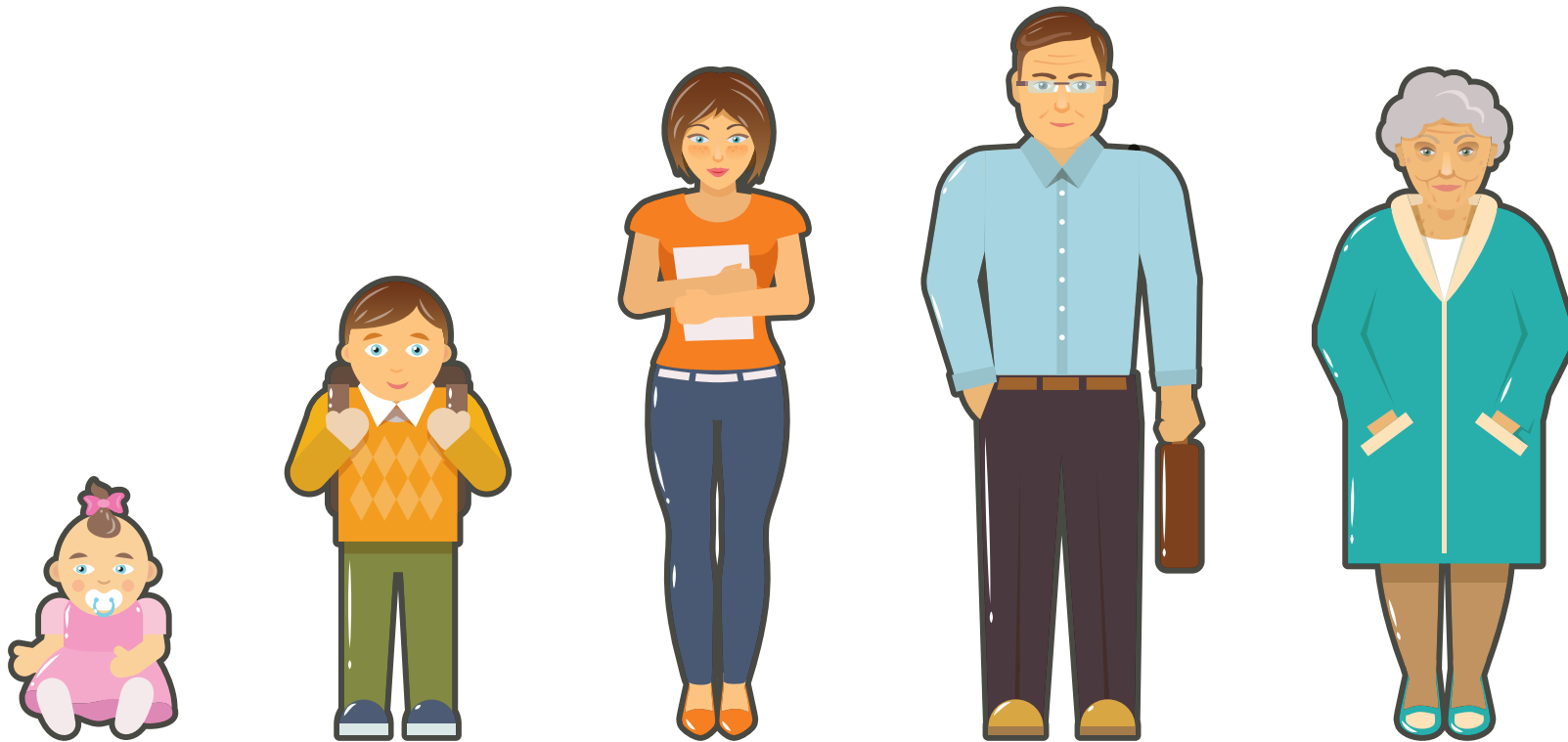


Potatoes grow from special seed potatoes.



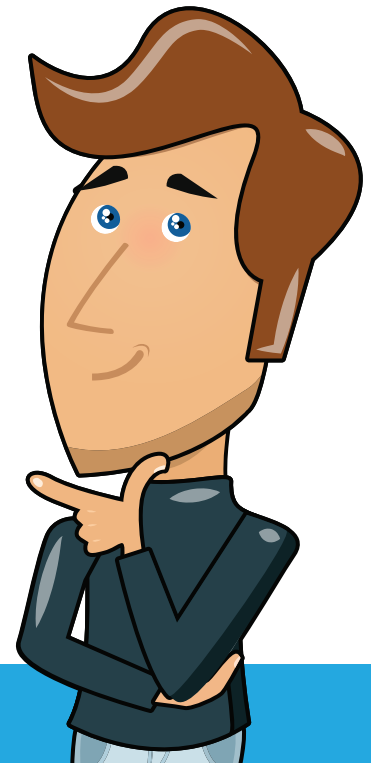
# Life Cycle of Humans

A life cycle shows the different stages of life.  
Here is a human life cycle.



# Thinking Time...

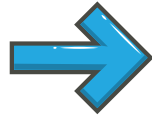
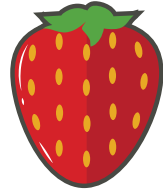
What do you think the different stages of a plant life cycle are?



# Strawberry Plant Life Cycle

## Ripen

When the strawberry fruit is ripe, it turns red. Strawberries grow seeds on their skin.



## Seeds

Strawberry plants start out as little seeds.



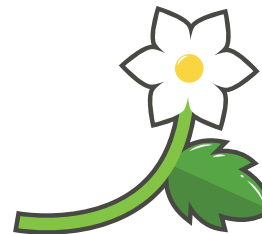
## Seedling

The seedling grows.



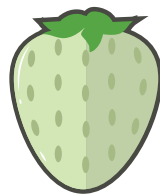
## Flowers

Small white flowers then grow.

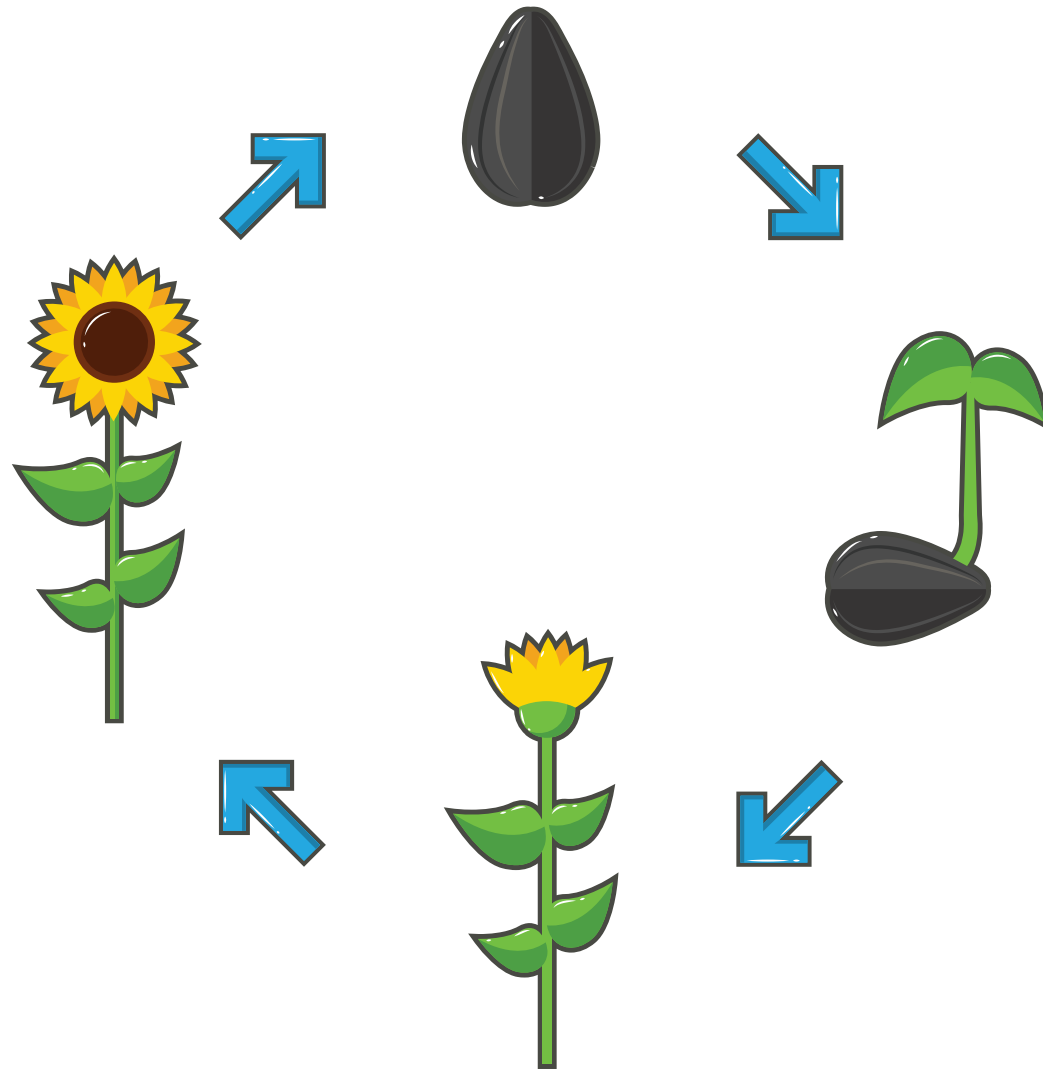


## Fruit

The plant then starts to grow strawberries. They are green to begin with.



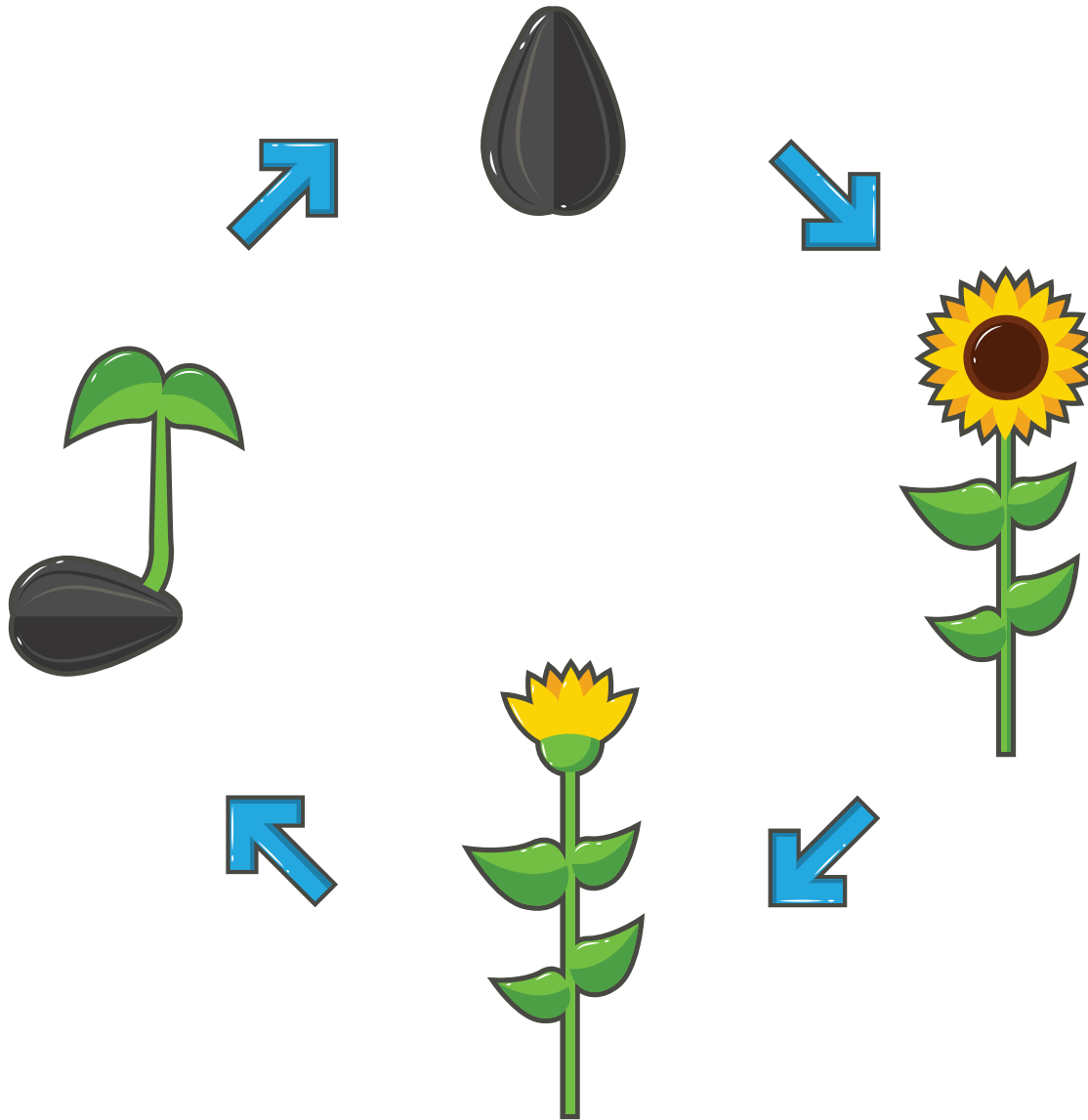
# Sunflower Life Cycle



Can you tell your partner what is happening in this sunflower plant life cycle?

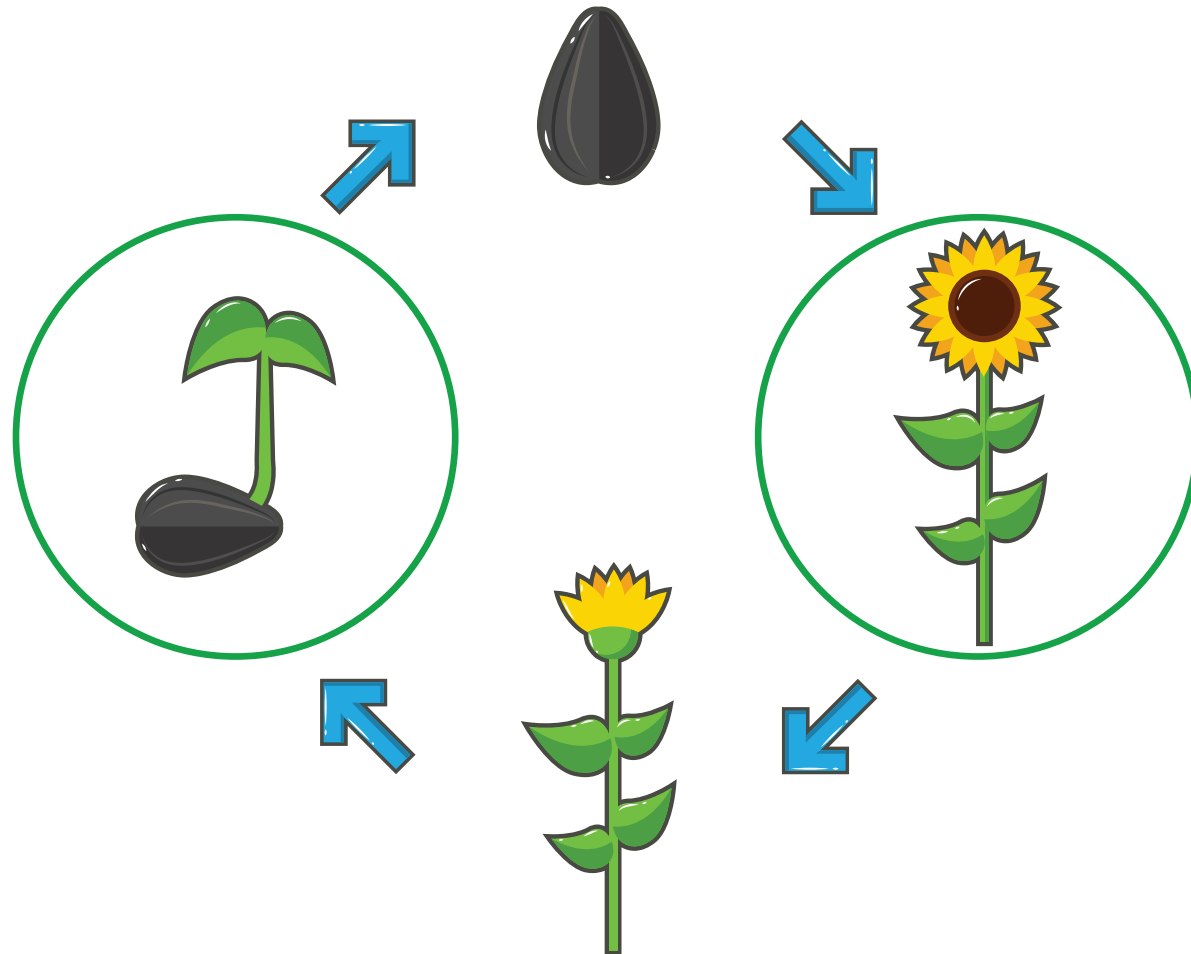
# Independent Activity

**On your worksheets, you need to cut out  
and place the plant life cycle in the  
correct order.**



**I think I have my plant life cycle in the wrong order. Can you find my mistake?**

I think I have my plant life cycle in the wrong order. Can you find my mistake?



The two circled pictures  
are in the wrong place.  
They need to swap places!