



Spelling, Punctuation and Grammar

Word Families

Word Families





Word Families

Introductory Activity

Independent Focused Activity

Review Activity

Consolidation Activity

Assessment

Aim

- I can identify word families.

Success Criteria

- I can describe what a word family is.
- I can use prefixes and suffixes to create different words for a family.
- I can identify different words in a word family.

Introductory Activity



Meet the Family



Look at the words around the Help family.
Can you sort them into groups? Decide how to group the words together.

helper

helpful

helpless

unhelpful

helping

The Help Family

help

helped



Meet the Family



How did you group the words?
One way could be...

Root Word

help

Prefix before the root

unhelpful

Suffix after the root

helper
helping
helped
helpful
Helpless



Meet the Family



Here is another word family, the Write family.
Can you sort these words into groups also?

writer

write

written

writing

underwrite

The Write Family

rewrite

writes



Meet the Family



How did you sort the 'write' family words?

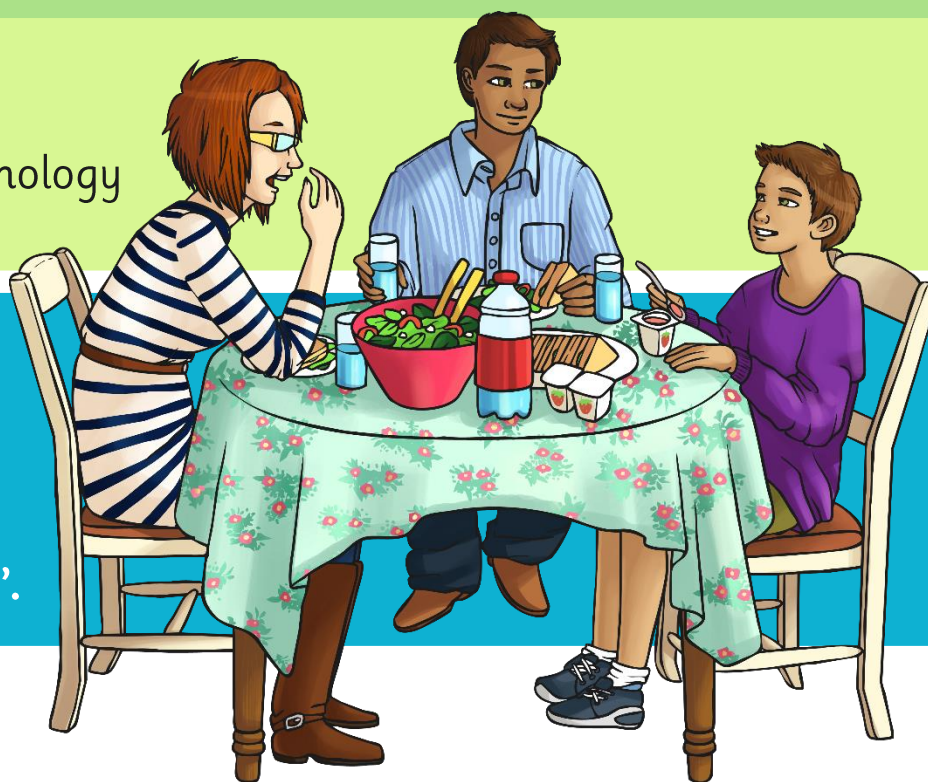
What are word families?

Word families are groups of words that link together through their meaning, grammar or morphology (roots, prefixes and suffixes).

These words...

rewrite written underwrite

...all come from the root 'write'.



Meet the Family

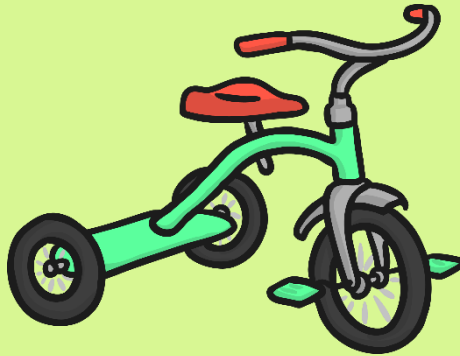


These words...

triangle



tricycle



tripod



...all come from the root 'tri', which means three in Latin.

Can you see why these words might need a 'three' in them?

This is a partial root word, because it does not make sense in English on its own, but it is a Latin root word.

Meet the Family



Word Families

Word families sometimes use prefixes and suffixes or change spelling in the word family.

re**write**

written

under**write**



Independent Focused Activity



Making Word Families



Now create some new word families using the Word Families Activity Sheet.

★ **Word Families**

I can identify word families. ○○○

Open a dictionary and look up the word 'semi'.
How many different words can you find that use the word 'semi' in them?
Make a list of 5 of them below.

★★ **Word Families**

I can identify word families. ○○○

Create as many new words as you can using the following roots, prefixes and suffixes.

super	ly	es
anti	ous	s
auto	ation	x
inter	call	ed
in	collect	er
ir	walk	est
dis	think	ing
mis	freeze	sub
un	re	

★★★ **Word Families**

I can identify word families. ○○○

Create as many new words as you can using the following roots, prefixes and suffixes.

super	ly	es
anti	ous	s
auto	ation	x
inter	call	ed
in	collect	er
ir	walk	est
dis	think	ing
mis	freeze	sub
un	re	

Challenge – Write three sentences, each using one of the words you made today.

a) _____

b) _____

c) _____

Extra Challenge – Create a 'made up' word. Explain what the definition might be in the dictionary.

New word _____

Meaning _____

Review Activity



Word Relays



You will be given a set of suffixes and prefixes for your table from the Word Relays Game. You can use these OR you can use words that you know already.

A word will appear on the board.

Can you create a new word using this root?

Stand up as soon as you have a new word.

The first person to stand wins a point for their table.

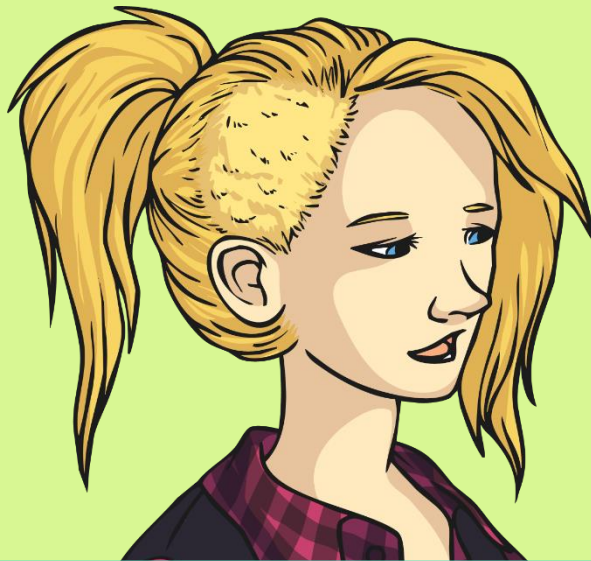


Word Relays



root word

Talk



talked

talking

talks

Can you find any more in a dictionary?

Word Relays



root word

(partial root word or Latin root word)



Uni

unite uniform unify unicorn universal university

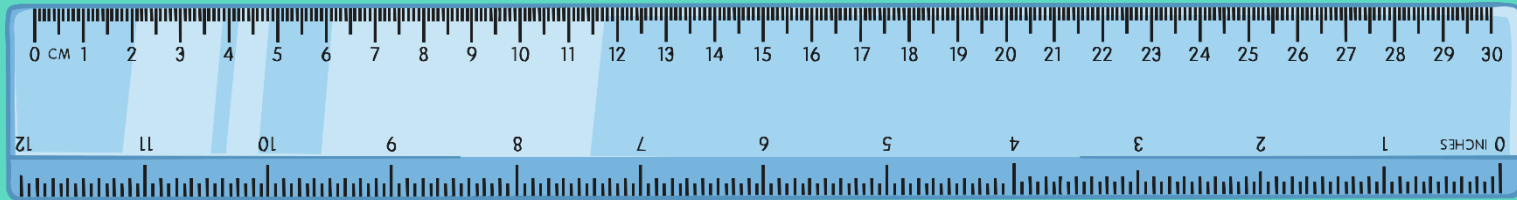
Can you find any more in a dictionary?

Word Relays



root word

Cent



century centipede centimetre percent

Can you find any more in a dictionary?

Word Relays



root word

Run



running runner runs rerun reruns rerunning

Can you find any more in a dictionary?

Consolidation Activity



Family Snap



Work on your own to complete the Family Snap Activity Sheets.

Snap Families

I can identify word families

Cut out and play snap with someone at home or in school, using the following cards.

place	placed
listen	listening
auto	automatic
dis	dislike
super	supermarket

twinkl planit SP40 Word Families

Snap Families

I can identify word families

Look at the root words below. Fill in a blank card with a word family word of your choice. The first one has been done for you. Cut them out and play snap with someone at home or in school.

place	placed
listen	
auto	
dis	
super	

twinkl planit SP40 Word Families

Snap Families

Challenge – Can you think of some more examples of word families? Make three more sets of snap cards to add to your set.

twinkl planit SP40 Word Families

Assessment



Word Families



Use all of the information you have learnt and practiced about word families. Work on your own to complete the Assessment Activity Sheet.

Name: _____ Date: _____

Word Families Mini Test

1. Match each prefix to the correct root so that it makes a new word.
The beautiful princess danced at the party.

re	flammable
mis	build
il	understand
in	legal

2. Circle all the words from the word family 'tion' in the sentences below.
The train station was still under construction, so the family took action and decided to walk to their grandma's house.

3. Tick each of the words that are in the word family 'fold'.

- folding
- folded
- folden
- unfold
- defold

twinkl planit
SPaG Word Families

2

4. Sort the following words into the correct word family.

powerful cleaner happiness testing happier unclean
happiest cleanable unhappy empower detest

Test	Clean	Power	Happy

5. Write a word from the word family 'place' that means to lose.

twinkl planit
SPaG Word Families

Word Families



Use all of the information you have learnt and practiced about word families. Work on your own to complete the Assessment Activity Sheet.

Application Activity

Look at the words below.

Think of 5 words in each word family.

Look

Like

Inter

Build

_____	_____	_____	_____
_____	_____	_____	_____
_____	_____	_____	_____
_____	_____	_____	_____
_____	_____	_____	_____

Aim



- I can identify word families.

Success Criteria

- I can describe what a word family is.
- I can use prefixes and suffixes to create different words for a family.
- I can identify different words in a word family.

