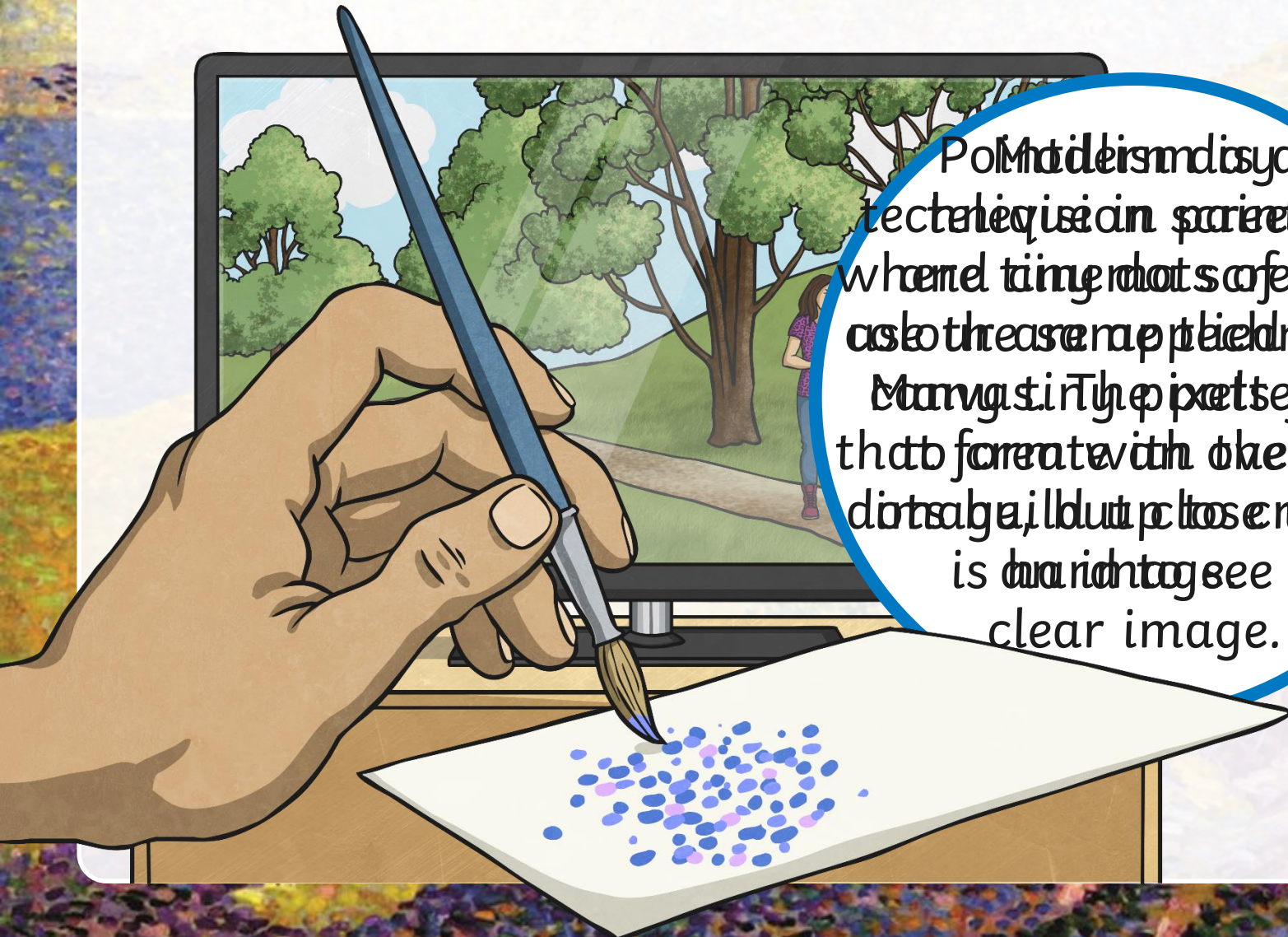


# Pointillism

A pointillist landscape painting by J.M.W. Turner titled 'Rain, Steam, and Great Central Railway'. The scene depicts a hazy, rainy day in a landscape with rolling hills. In the foreground, a woman in a purple dress sits on a path. The middle ground shows a railway line with a steam locomotive and a bridge. The background features distant hills and a body of water. The entire scene is rendered using the pointillist technique, with small, distinct dots of color.

twinkl

# What is Pointillism?



Pointillism is a technique in painting where tiny dots of color are applied to the canvas. When viewed from a distance, the dots blend together to form a clear image.

# The Art of Science



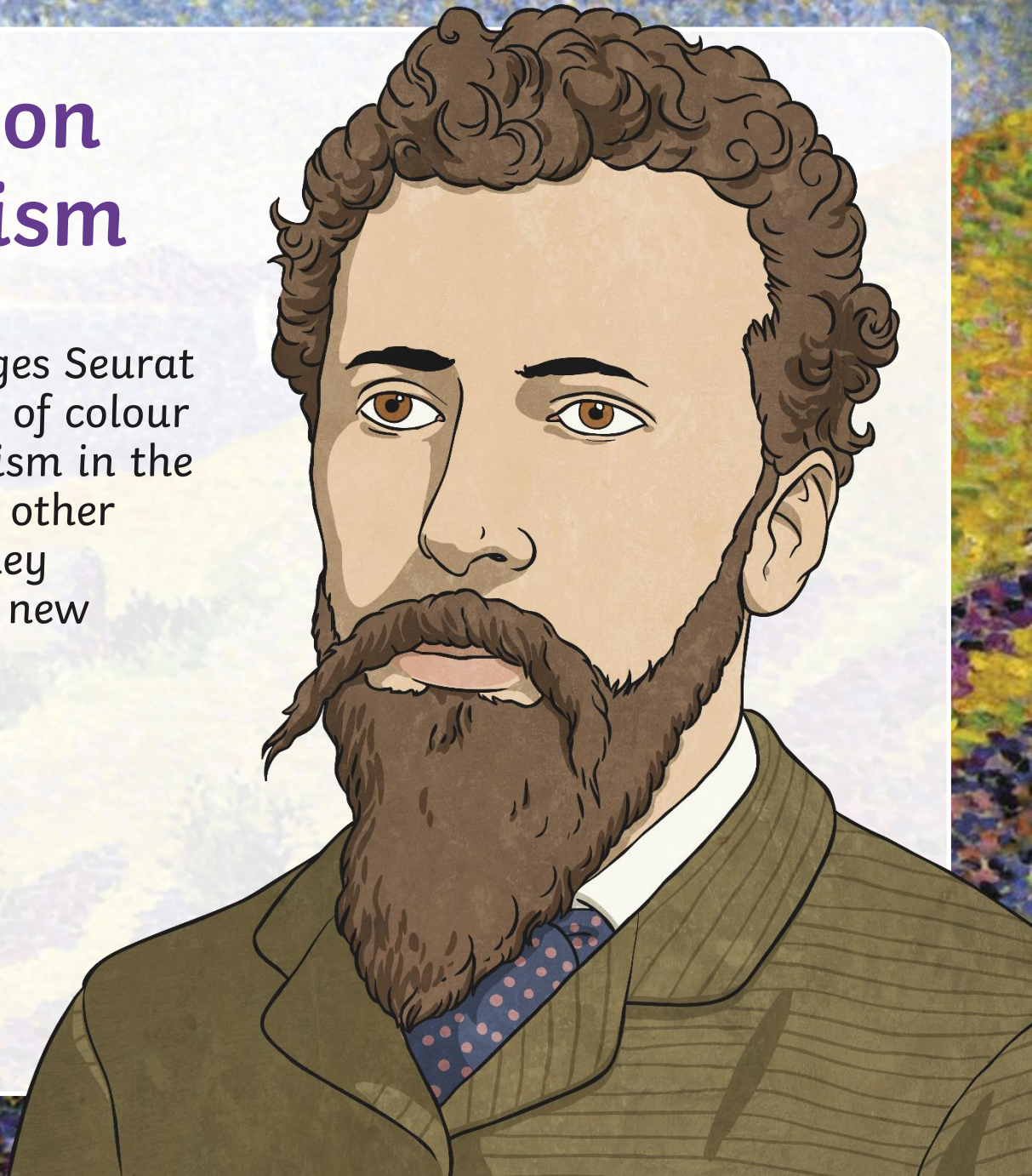
Instead of the paint being blended and mixed on a palette, the paint is directly applied to the canvas. The fact that the dots are so close together cause the colours to appear blended.

The Circus

Look carefully at the painting 'The Circus' by Georges Seurat. The dots are so close together, they seem to blur into different tones.

# The Creation of Pointillism

The French artist Georges Seurat studied the application of colour and he created pointillism in the 1880s. He worked with other artists, and together they became known for this new artistic style.



# A Sunday Afternoon on the Island of La Grande Jatte

Georges Seurat



Look carefully  
to see the tiny  
dots that  
make up the  
whole image.

Click the image for a closer look.

# In the Time of Harmony; the Golden Age is Not in the Past it is in the Future

Paul Signac

Signac loved the coast and often painted beach scenes.



Can you see any similarities with Seurat's painting?

Click the image for a closer look.

# Côte de la Citadelle

## Maximillian Luce

Luce painted a wide range of different subjects, but mostly he painted landscapes.



Discuss how Luce creates a sense of perspective with a limited choice of colours.

Click the image for a closer look.

# The Harvesters

## Charles Angrand



Angrand was a great friend of Seurat and imitated his pointillist style.

Click the image for a closer look.



twinkl